

**MOOR
AND
MORE**

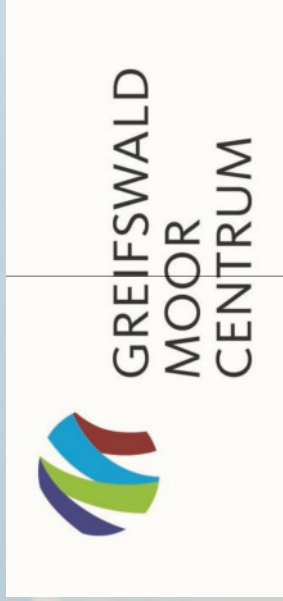
Paludi-Tinyhouse

Building materials
from wet agriculture





Moor and More

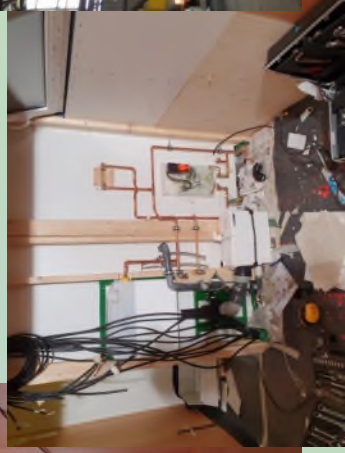


UNIVERSITÄT GREIFSWALD

Wissen lockt. Seit 1456



Paludi-Tinyhouse





Paludi-Tinyhose on the road



Leipheim Bayern



Angermünde BB



Nordbau Neumünster



Norla Rendsburg SH



Ahlenmoor Niedersachsen



Materialien



- Cattail
- Reed
- Alder
- Wet meadow grasses

Cattail/Thypha



Cattail/Thypha



Wool



Whole plant

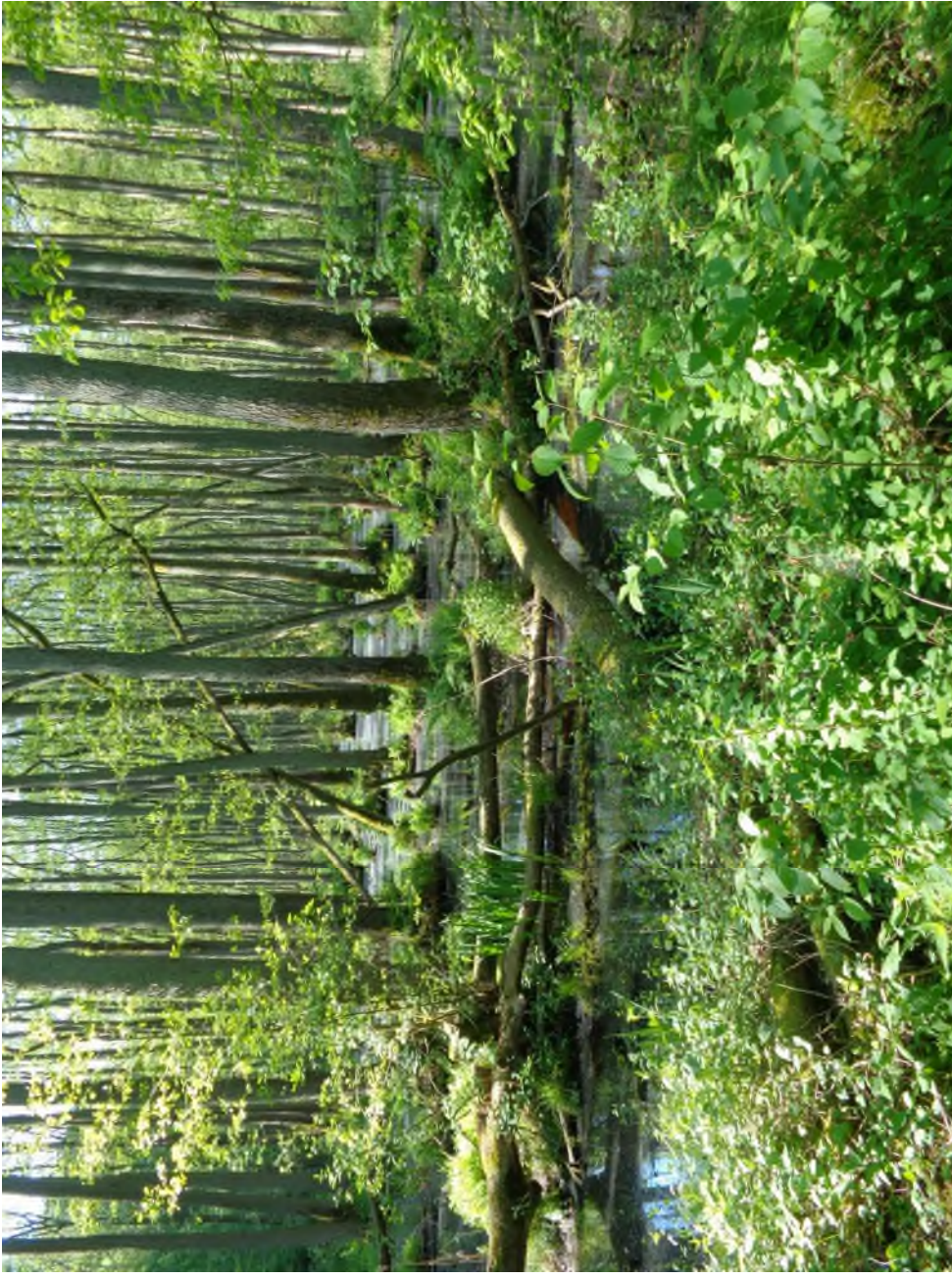


Reed



Reed

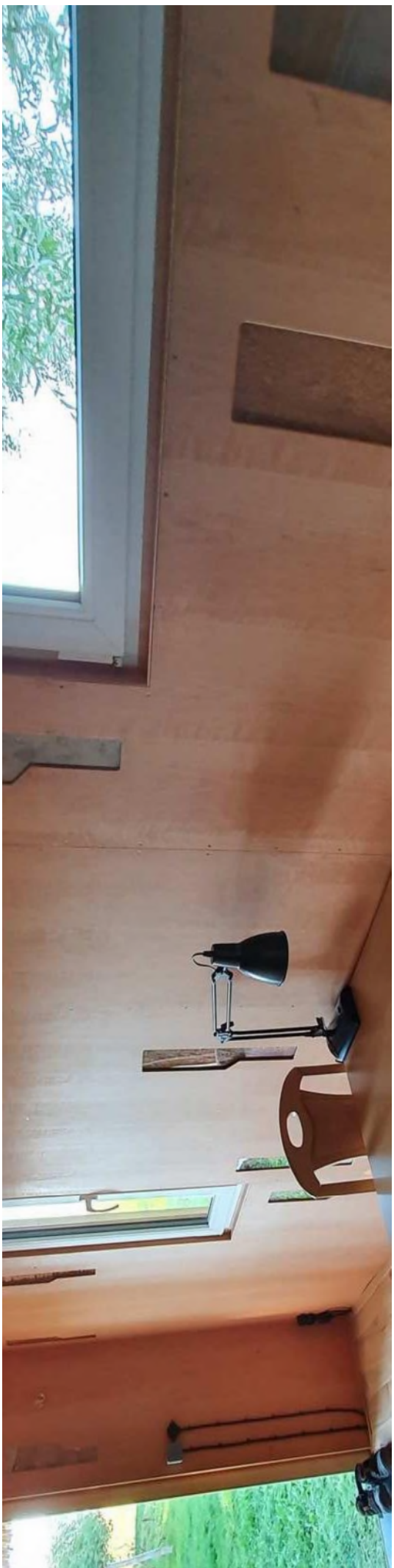




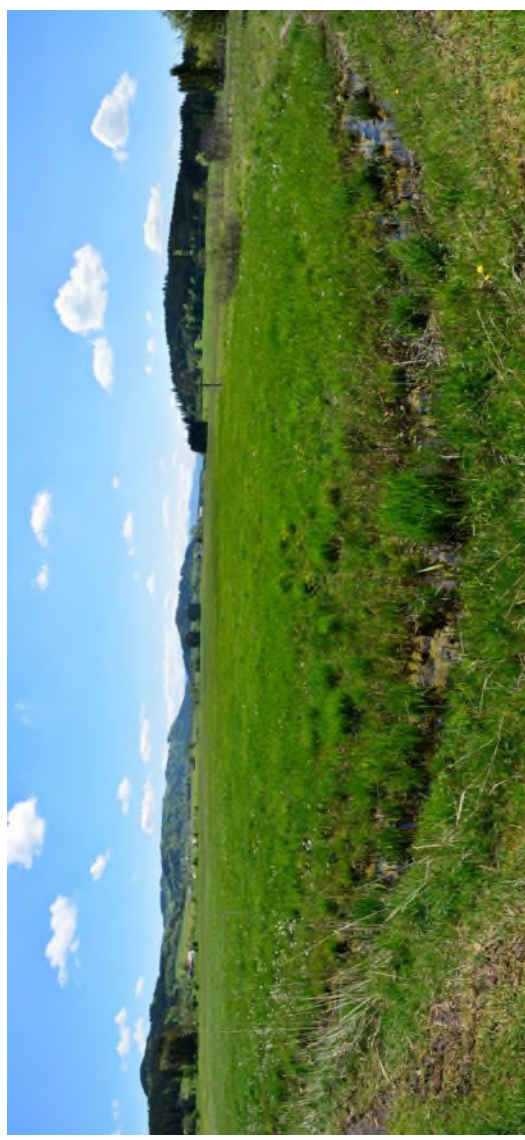
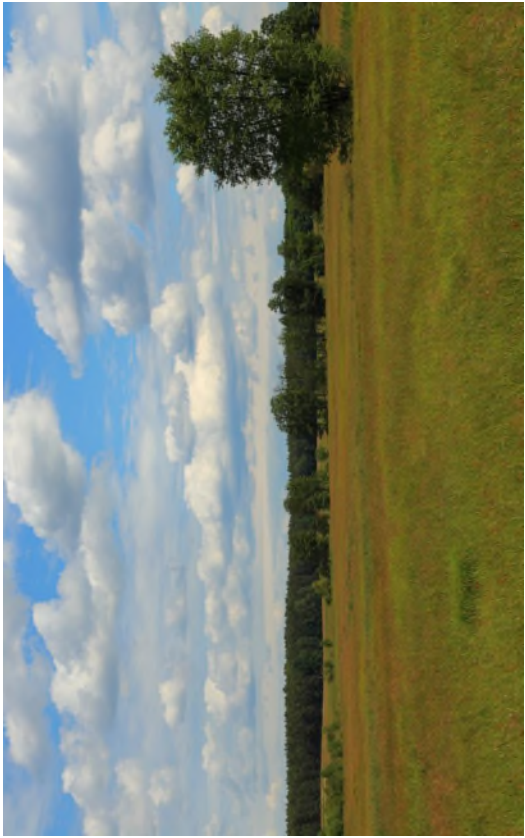
Alder



Alder



Wet meadow grasses





Wet meadow grasses

Implementation problems



Perspectives of paludi materials

- Material acquisition
 - Easier now that the first areas are ready for cultivation
- Regionality
 - Easier now that the first areas are ready for cultivation
- Processability
 - Will improve as more experience is available
- Price high due to niche production
 - Prices decrease when production increases
- CO2 balance of the building materials

CO₂Savings

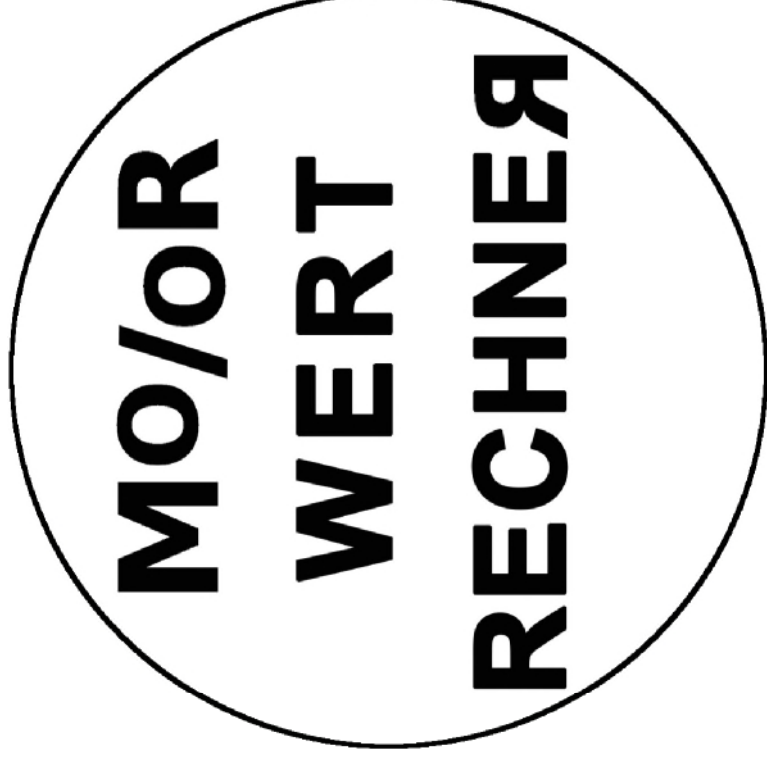
- 3-fold CO₂ reduction
 - CO₂ binding in the building material itself
 - CO₂ binding in the soil through the rewetting of drained moors
 - Substitution of a conventional CO₂-intensive building material
- CO₂ Besteuerung
- Inclusion of the CO₂ intensity of products in the tender criteria

What we do

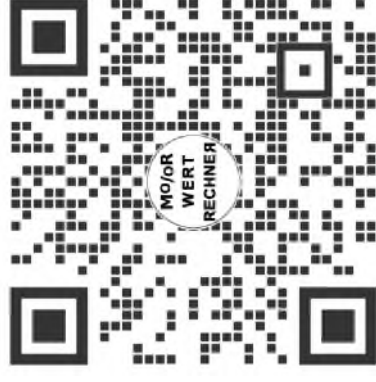
- Furniture from wet meadow grasses
 - End product
 - Cooperative
 - Assistance with waterlogging (legal, technical, etc)
 - Machinery ring
 - Acceptance of the harvest
 - Profit sharing on the end product (furniture)
- Paludi-Tinyhouse-Tours(Awareness raising)
- Paludi Tinyhouse Distribution/Further Development

Time for Questions

Calculating the value of the peatland



www.moorwertrechner.de



Thank you for your attention



www.moor-and-more.de